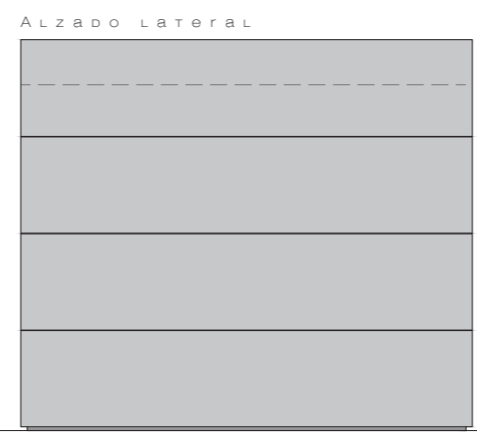
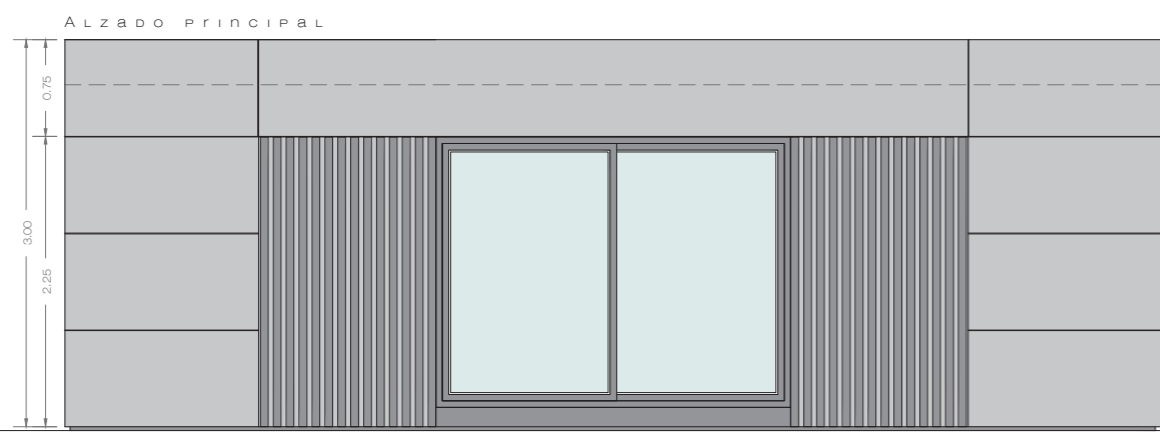


SUPERFICIES ÚTILES

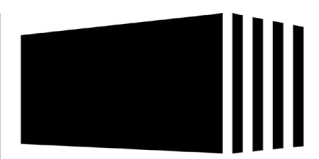
COCINA	7.30m ²
COMEDOR	14.10m ²
BAÑO	1.80m ²
SERVICIO	1.50m ²

SUPERFICIE INTERNA 24.70m²

SUPERFICIE CONSTRUIDA 29.75 m²



SG 29
 MODELO "GASTRONÓMICO"



Space Garden
 by Resan